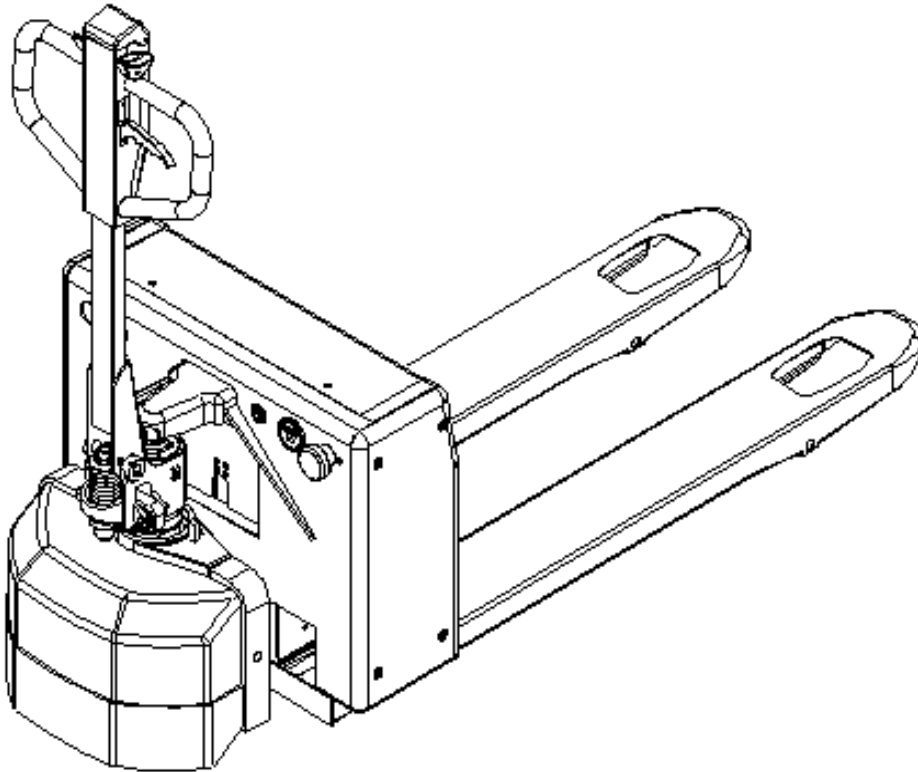




## ESET33 SEMI-ELECTRIC PALLET TRUCK PARTS BREAKDOWNS 2010



**Mobile Industries Inc.**

**Phone:** 800-527-4612 / 905-279-5370

**Fax:** 800-952-5097 / 905-279-7384

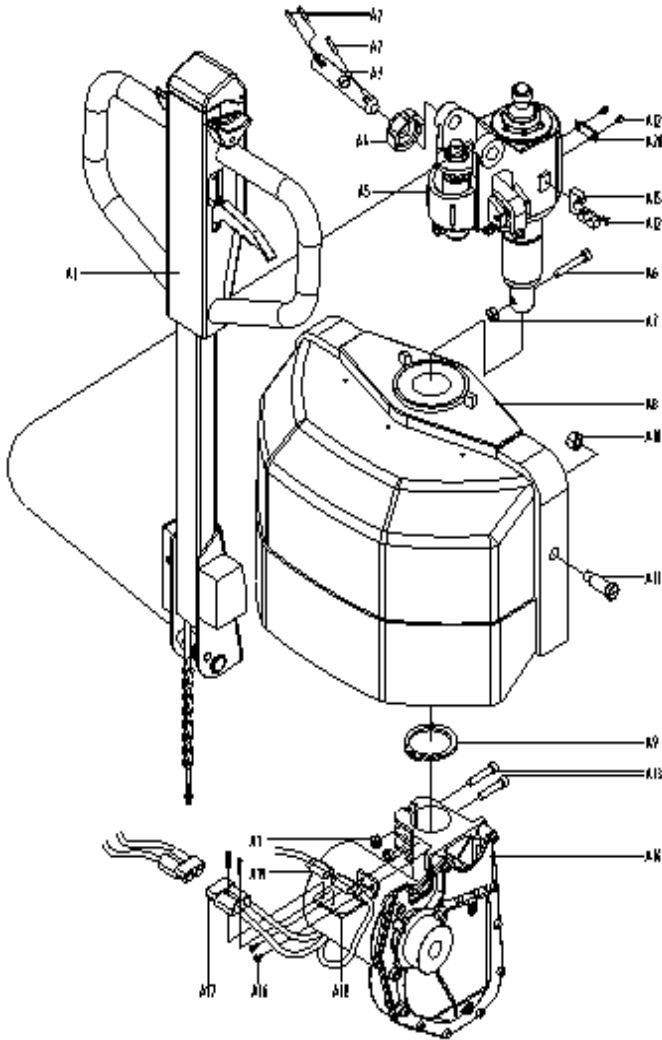
**E-Mail:** [info@mobilept.com](mailto:info@mobilept.com)

**Website:** [www.mobilept.com](http://www.mobilept.com)

# **ESET33 Semi-Electric Pallet truck**

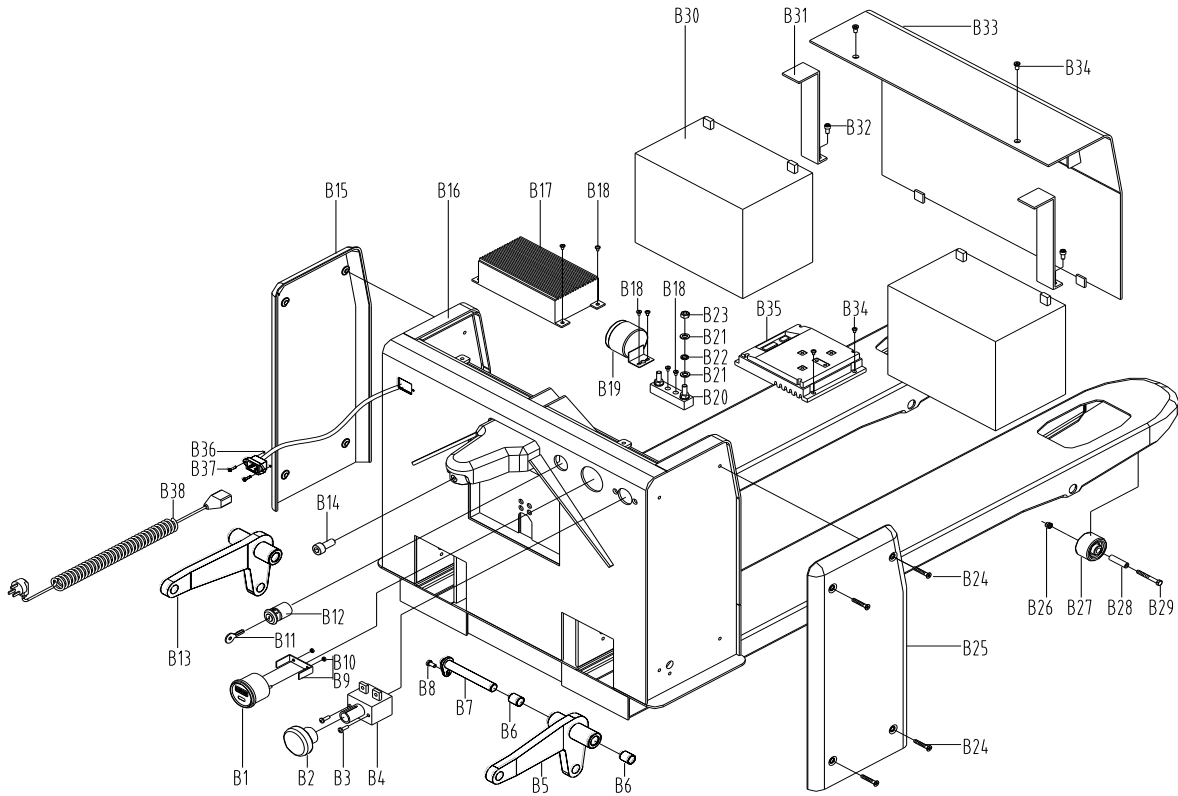
## **Parts Breakdowns**

1. General assembly 1.....	1
2. General assembly 2.....	2
3. Drive wheel assembly.....	3
4. Fulcrum bearing assembly.....	4
5. Connecting rod and wheel carrier unit.....	5
6. Parts catalogue of handle unit1.....	6
7. Parts catalogue of handle unit2.....	7
8. Oil pump assembly1.....	8
9. Oil pump assembly2.....	9
10. Line Assembly.....	10



No.	Code	Name	Qty.
A1	CBD10A3.1-00	Handle assembly	1
A2	GB879-86	Elastic pin 5X32	3
A3	CBD10A.8-02	Press axle	1
A4	CBD10A2.8-01	Positional cam	1
A5	CBD10A2.3-00	Oil pump assembly	1
A6	GB70-85	Soket head cap screw M8X50	1
A7	GB889-86	Lock nut M8	3
A8	CBD10A2.4-00	Supporting seat assembly	1
A9	GB894.1-86	Circlip for axle 80	1
A10	GB889-86	Lock nut M12	2
A11	CBD10A2-03	Axle	2
A12	GB823-1988	Cross recessed screw M4X8	3
A13	GB70-85	Soket head cap screw M8X40	2
A14	CBD10A.5-00	Drive wheel assembly	1
A15		Wire clip	1
A16	GB/T818-2000	Cross recessed screw M4X10	2
A17		Plug	1
A18	CBD10A2-17	Wire connecting plate	1
A19		Connector	1
A20	CBD10A2-18	Wire pressing plate	1

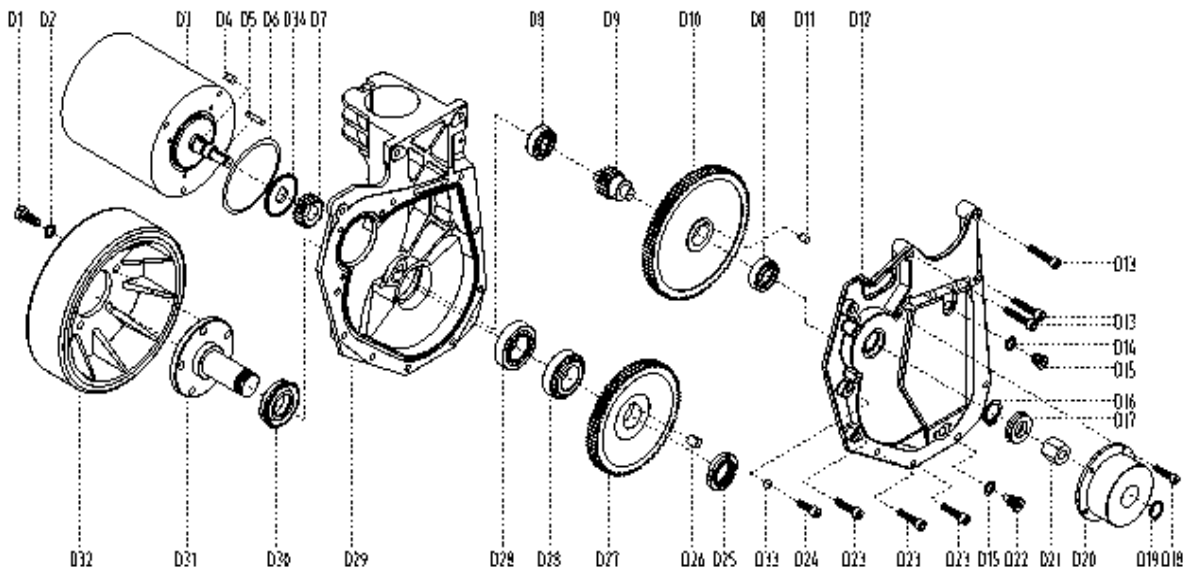
# ESET33 General assembly 2



No.	Code	Name	Qty
B1		Coulometer	1
B2		Switch button	1
B3	GB/T818-2000	Pan head screw M5X16	2
B4		Power switch	1
B5	CBD10A.9-00	Locking arm unit, right	1
B6	CSB-10	Combined busher 16X18X20	4
B7	CBD10A3-05	L-pin roll	2
B8	GB/T5781-2000	Hexagon bolt M6X12	2
B9		Locating frame, coulometer	1
B10	GB/T41-2000	Nut M4	2
B11		Key	2
B12		Electric lock	1
B13	CBD10A.9-00	Locking arm unit, left	1
B14	GB70-85	Internal hexagon screw M6X12	1
B15	CBD10A3-02	End cap, left	1
B16	CBD10A3.2-00	Frame unit	1
B17		Charger	1
B18	GB/T818-2000	Pan head screw M4X16	8
B19		Buzzer	1

No.	Code	Name	Qty
B20		Fuse base	1
B21	GB/T95-2002	Flat washer 8	4
B22	GB/T859-1987	Spring gasket 8	2
B23	GB/T41-2000	Hexagon nut M8	2
B24	GB/T819.1-2000	Countersunk screw M6X35	8
B25	CBD10A3-03	End cap, right	1
B26	GB889-86	Hexagon locknut M6	2
B27	AF-09	Pinion	2
B28	AF-08	Casing	2
B29	GB5782-86	Hexagon bolt M6X50	2
B30		Battery 12V80Ah	2
B31	CBD10A3-01	Battery hoop	2
B32	GB70-85	Internal hexagon screw M6X12	4
B33	CBD10A3.3-00	Doors unit	1
B34	GB/T822-2000	Screw M6X10	7
B35		Electric control	1
B36	GB889-86	Nut M3	2
B37	GB68-85	Bolt M3X12	2
B38		Charger Line	1

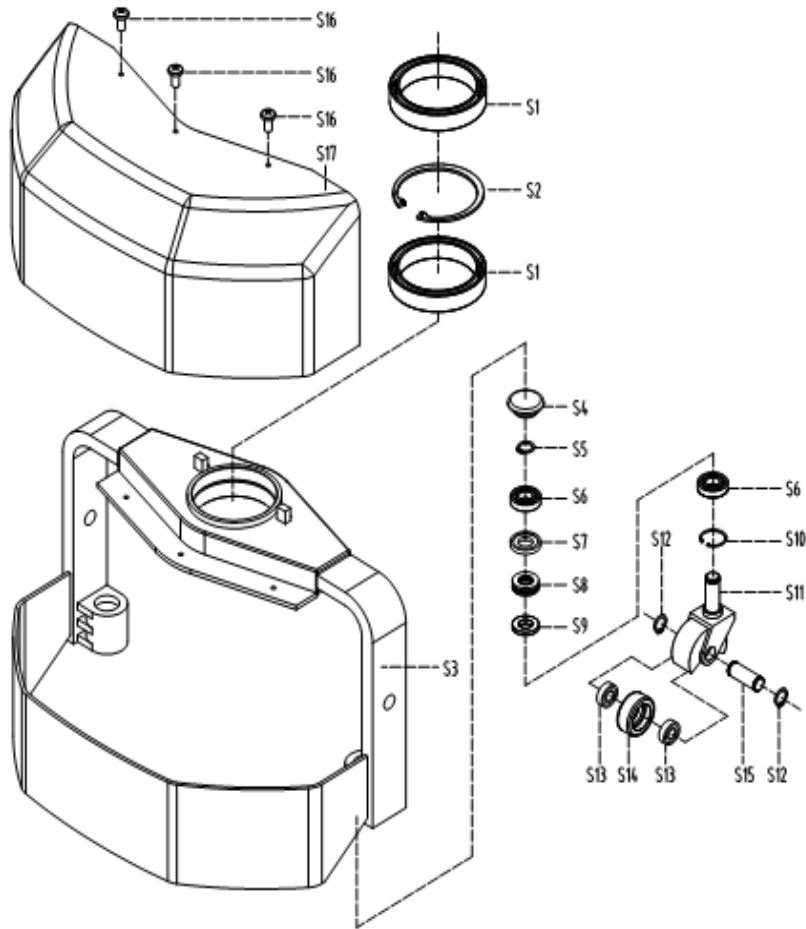
# ESET33 Drive Wheel assembly



No.	Code	Name	Qty.
D1	GB5783-2000	Hex bolt M8X20	5
D2	GB93-1987	Spring gasket 8	5
D3		Motor	1
D4	GB1096-79A	Flat key 5X14	1
D5	GB1096-79A	Flat key 3X3X16	1
D6	GB3452.1-82	O ring 2.65X56	1
D7	CBD10A.5-04	Gear 1-19	1
D8	GB/T276-199	Bearing 6201	2
D9	CBD10A.5-06	Gear 3-17	1
D10	CBD10A.5-05	Gear 2-90	1
D11	GB1096-79C	Flat key 6X10	1
D12	CBD10A.5-01	Left gear box body	1
D13	GB70-85	Hex screw M6X35	3
D14	GB982-77	Combined washer 10	2
D15	CN.2-17	Screw bolt	1
D16	GB894.1-86	Axle stop 15	1
D17	HG4-692-67	Skeletal oil seal 14-25	1

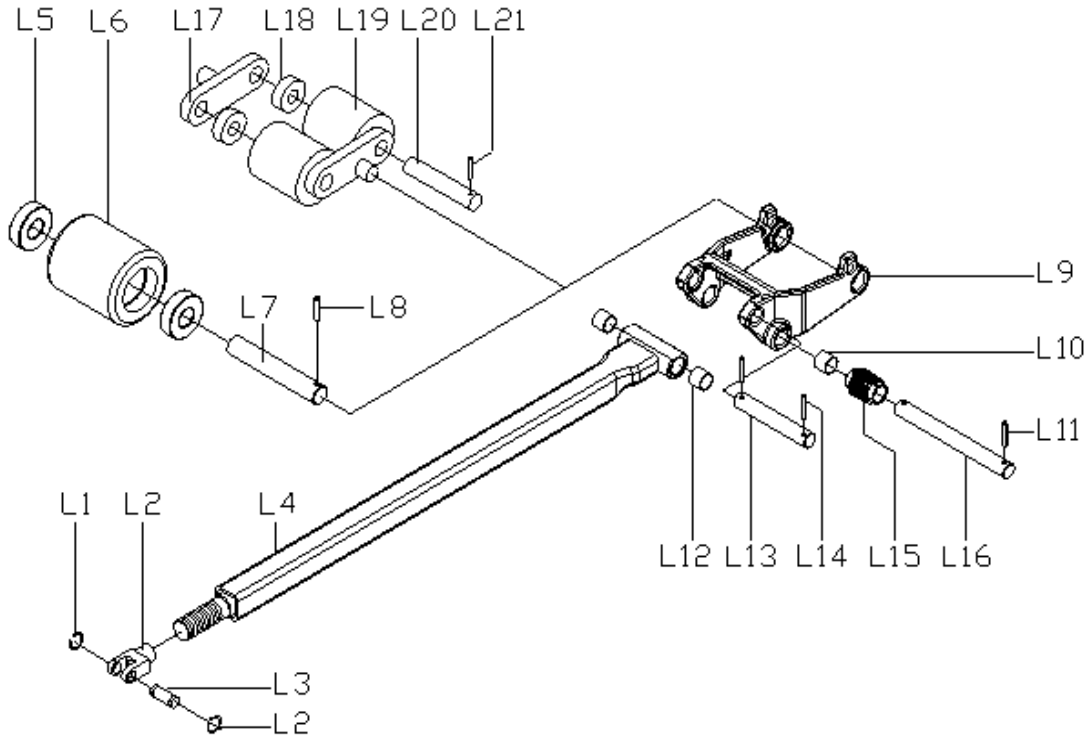
No.	Code	Name	Qty.
D18	GB70-85	Hex screw M4X40	3
D19	GB894.1-86	Axial stop 10	1
D20		Brake	1
D21	CBD10A-12	Hex connecting piece	1
D22	CBD10A.5-10	Oil outlet plug	1
D23	GB70-85	Hex screw M6X30	6
D24	GB70-85	Hex screw M6X35	3
D25	CBD10A.5-08	Circular nut M25X1.5	1
D26	GB1096-79B	Flat key 8X12	1
D27	CBD10A.5-09	Gear 4-77	1
D28	GB/T297-199	Bearing 32005	2
D29	CBD10A.5-02	Right gearbox body	1
D30	HG4-692-67	Skeletal oil seal 35-47	1
D31	CBD10A.5-07	Wheel axis	1
D32	CBD10A.5-12	Bull wheel	1
D33	GB93-1987	Spring gasket 6	3
D34	CBD10A.5-13	Oil Stop Ring	1

# ESET33 Fulcrum Bearing assembly



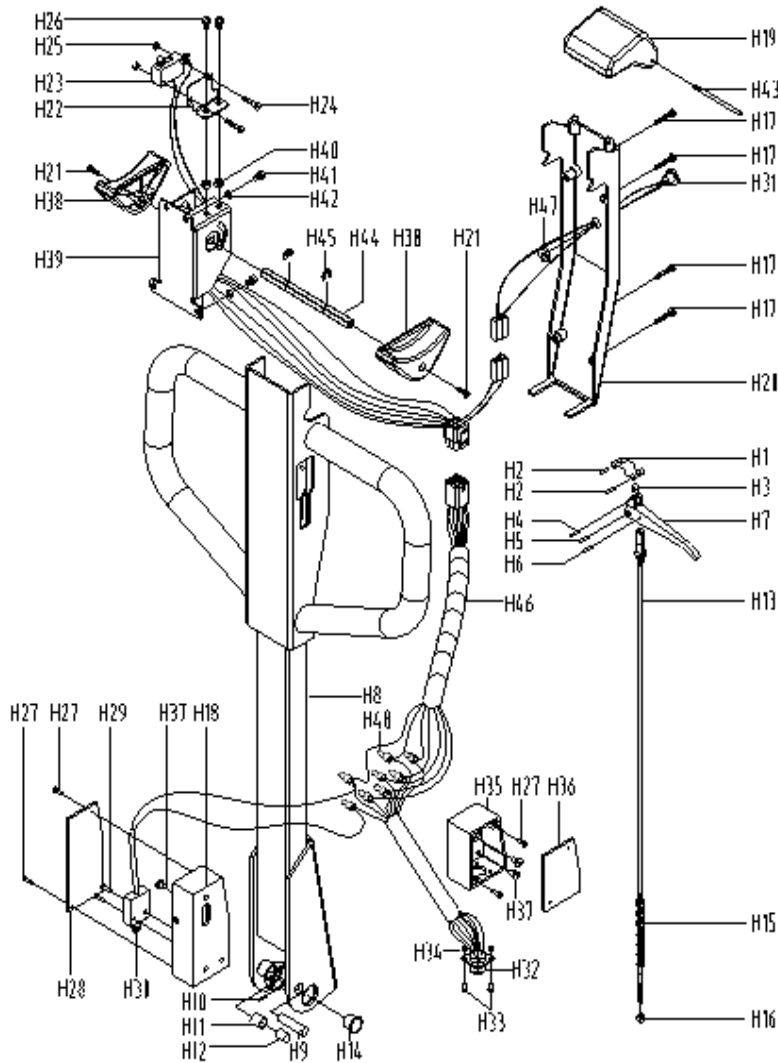
No.	Code	Name	Qty.
S1	GB/T276-94	Bearing 61916	2
S2	GB893.1-86	Hole stop 110	1
S3	CBD10A2.4-00	Fulcrum bearing assembly	1
S4	CBD10A-18	Dust proof cover	2
S5	GB894.1-86	Axial stop15	2
S6	GB/T267-94	Bearing 16002	4
S7	CBD10A-04	Washer 1	2
S8	GB/T301-1995a	Thrust ball bearing51102	2
S9	CBD10-05	Washer 2	2
S10	GB893.1-86	Hole stop 32	2
S11	CBD10A-06	Universal wheel frame	2
S12	GB894.1-86	Axial stop 15	4
S13	GB/T276-94	Bearing 61902	4
S14	CBD10A-07	Universal wheel	2
S15	CBD10A-08	Wheel axis	2
S16	GB818-85	Pan-head screw M5X9	3
S17	CBD10A2.4-07	Masking plate	1

# ESET33 Connecting Rod assembly



No.	Code	Name	Qty.
L1	GB894.1-86	Axial stop 16	2
L2	AF.7-05	Jointing head	1
L3	EF-01	Dual slot pin axis16X52	1
L4	CBD10A3.4.1-00	Connecting rod assembly	1
L5	GB278-86	Bearing 60204	2
L6	AF.7-01A/C	Fork wheel 80/74	1
L7	AF.7-02	Wheel axis 20X122	1
L8	GB879-86	Elastic pin 5X32	1
L9	WA.5-01	Wheel frame	1
L10	CSB10	Sleeve 16X18X15	2
L11	GB879-86	Elastic pin 5X28	2
L12	CSB10	Sleeve 16X18X15	2
L13	DB.3.3-01	Dual slot pin axis 16X100	1
L14	GB879-86	Elastic pin 5X28	2
L15	WA-08	Roller	2
L16	WA-07	Pin roll with double holes	1
L17	AF.7-04	Backing frame	2
L18	GB278-86	Bearing 60204	4
L19	AF.7-01	Fork wheel	2
L20	SYBC.5-09	Wheel axis 20X95	2
L21	GB879-86	Elastic pin 5X32	4

# ESET33 Handle assembly 1

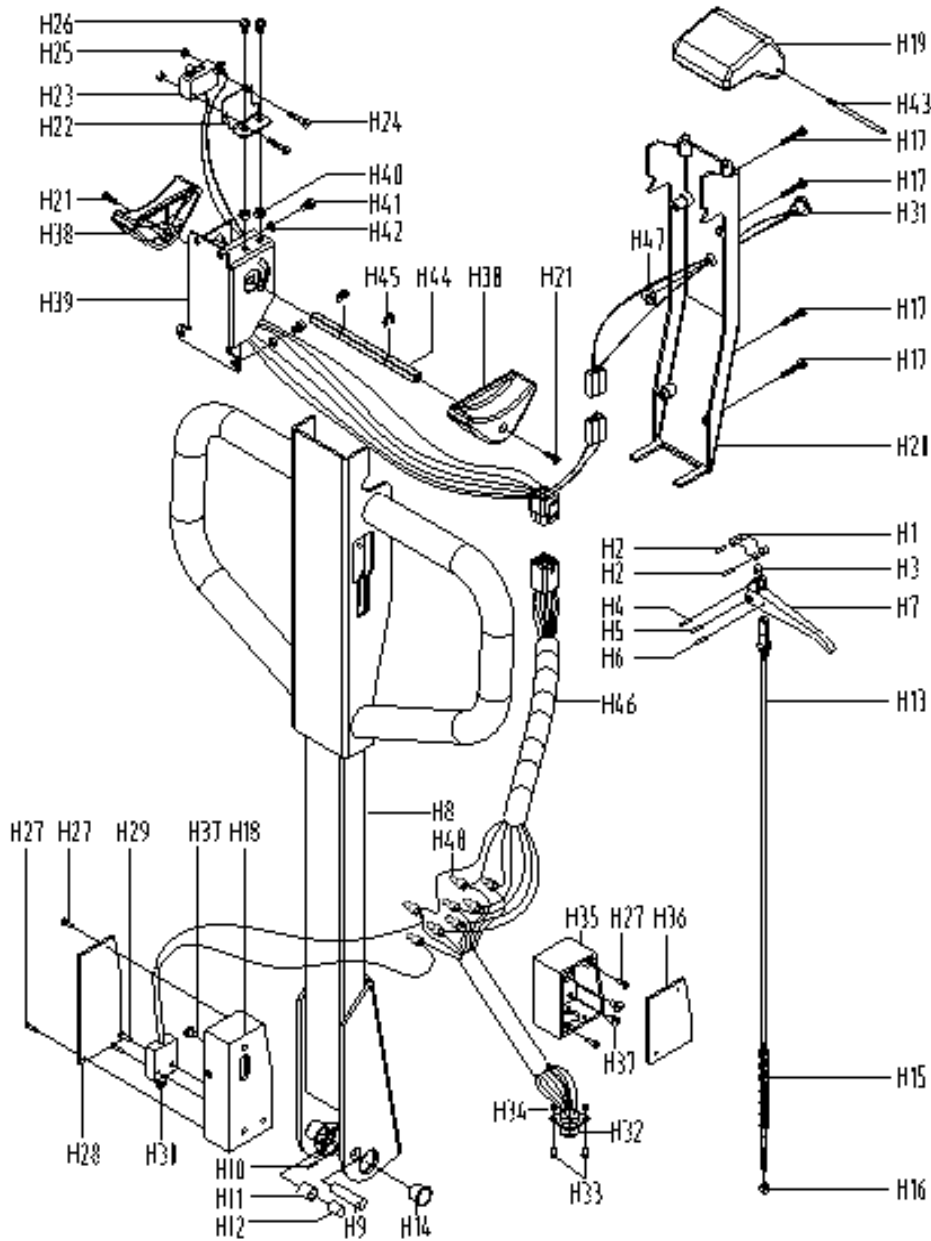


No.	Code	Name	Qty
H1	DF.1-01A	Locating tab	1
H2	GB879-86	Elastic pin4X31	2
H3	DF.1-02	Roller	1
H4	GB879-86	Elastic pin4X20	1
H5	GB879-86	Elastic pin6X31	1
H6	GB879-86	Elastic pin4X20	1
H7	DF.1-03	Handle	1
H8	CBD10A3.1.1-00	Handle assembly	1
H9	DF I .2-04	Cylindrical pin	1
H10	GB879-86	Elastic pin3X20	1
H11	CN.2-13	Press wheel	1
H12	SF-1/1220	Sleeve 1220	1
H13	CBD10A.1.2-0	Tension bar assembly	1
H14	SF-1	SleeveSF-1F2015	2
H15	GB6075-86	Chain c-6-9-04c	

No.	Code	Name	Qty
H16	GB889-86	Locking nut M5	1
H17	GB/T823-1988	Self tapping screw ST M4X2	4
H18	CBD10A2.1.3-0	Hand lever wire box	1
H19	CBD10A3.1-01	Button	1
H20	CBD10A3.1-03	Plastic cover, handle	1
H21	GB/T67-2000	Bolt M3X10	2
H22	CBD10A3.1-04	Switch erection panel	1
H23		Stroke switch	1
H24	GB818-85	Pan-head screw M3X1	2
H25	GB889-86	Locking nut M3	2
H26	GB/T823-1988	Bolt M4X8	2
H27	GB846-1985	Self tapping screw ST2.9X13	4
H28	CBD10A2.1-05	Lever wire box cover	1
H29	GB70-85	Hex+G60 screw M5X2	2
H30	TZ-3112	Stroke switch TZ-3112	1



## ESET33 Handle assembly 2

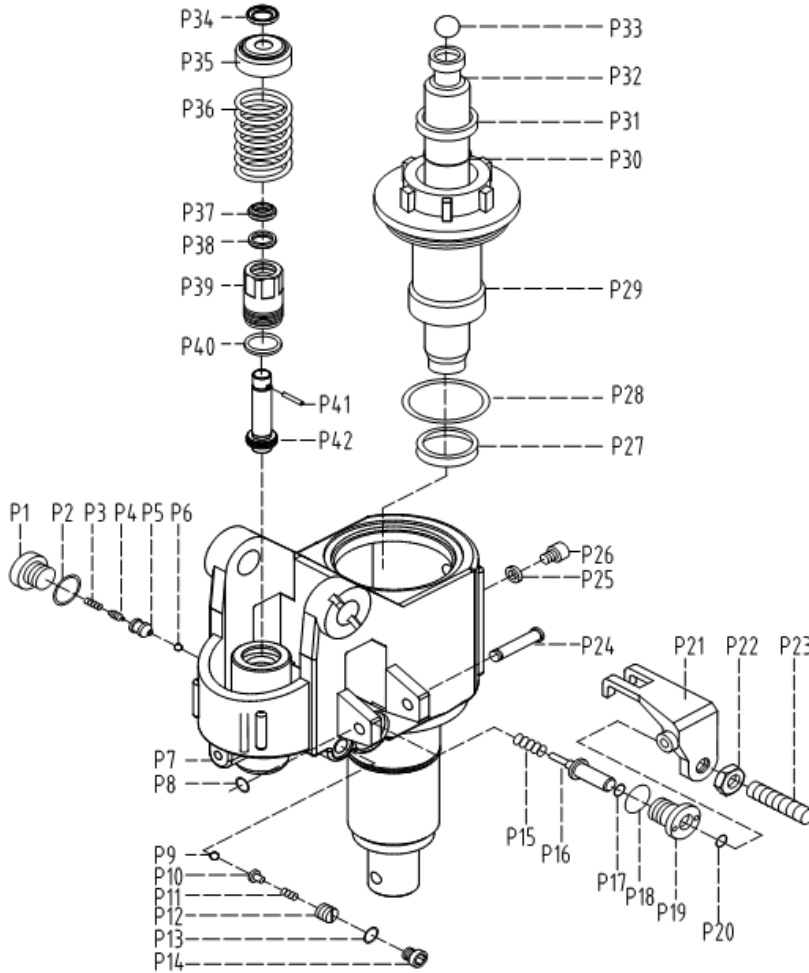


No.	Code	Name	Qty
H31		Switch	1
H32		Socket	1
H33	GB/T818-2000	boltM3X8	4
H34	GB41-86	Nut M3	4
H35	CBD10A2.1-0	Hand lever wire box	1
H36	CBD10A2.1-0	Lever wire box cover	1
H37	GB67-85	Bolt M5X8	3
H38	CBD10A3.1-0	Turn-knob	2
H39		Accelerator	1

No.	Code	Name	Qty
H40	GB889-86	Locking nut M4	2
H41	GB/T823-198	Bolt M4X6	4
H42	GB/T859-198	Spring washer 4	4
H43	CBD10A3.1-1	Long and thin axle	1
H44		Square shaft, accelerator	1
H45		Split baffle ring	2
H46		Handle Line	1
H47		Nut	1
H48		Line Cap	8

With H39

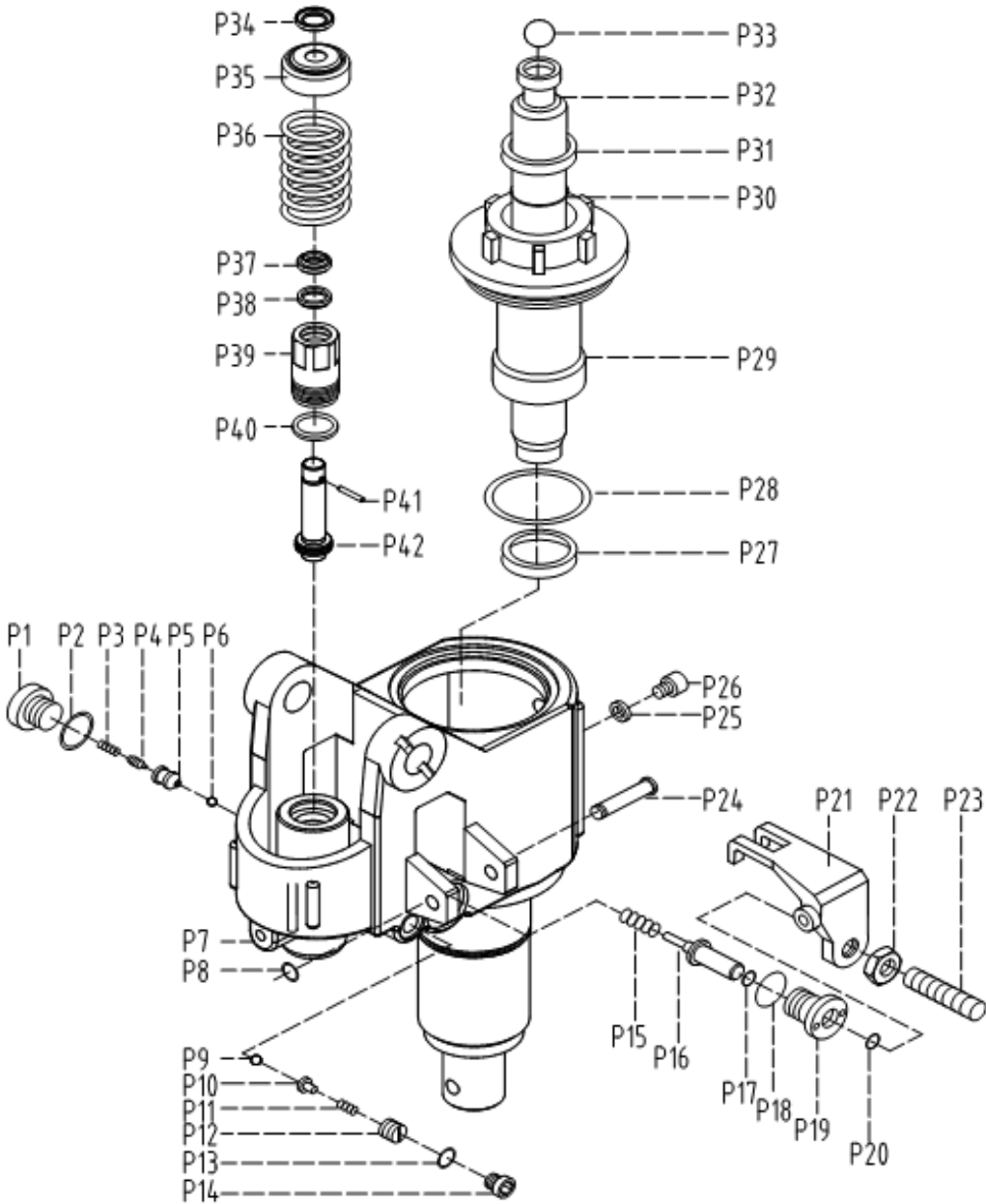
# ESET33 Oil Pump assembly 1



No.	Code	Name	Qty
P1	JF.1-17	Sealing screw M20X1	1
P2	JB982-77	Combined washer 20	1
P3	AF.2-9	Cone spring	1
P4	SYBC.2-07	Valve core	1
P5	SYBC.2-08	Valve body	1
P6	GB308-77	Steel ball 6.35	1
P7	CBD10A2.3.1-0	Base frame No. 7	1
P8	GB894.1-86	Axial stop 8	1
P9	GB308-77	Steel ball 5	1
P10	CN.2-26	Ball seat	1
P11	CN.2-27	Spring 2X8X16	1
P12	CN.2-28	Regulating screw M10X	1
P13	JB982-77	Combined washer 10	1
P14	CN.2-17	Screw plug M10X1	1
P15	DF I .2-12	Spring 1.2X9X20	1

No.	Code	Name	Qty
P16	AF.02-7	Striker	1
P17	GB3452.1-82	O-ring 7X1.8	1
P18	JB982-77	Combined washer 20	1
P19	AF.2-06a	Striker seat	1
P20	GB3452.1-82	O-ring 8X2.65	1
P21	AF.2-08	Lever panel	1
P22	GB6170-86	Hex nut M6	1
P23	GB73-85	Fastening screw M6X2	1
P24	BF.2-3	Pin axis 8X58	1
P25	JB982-77	Combined gasket 10	1
P26	CN.2-17	Screw plug M10X1	1
P27	UN31.5	Oil seal 31.5X41.5X6	1
P28	GB3452.1-82	O-ring 65X2.65	1
P29	BF.2-2	Guide bar sleeve φ31.	1
P30	GB3452.1-82	O-ring 31.5X3.55	1

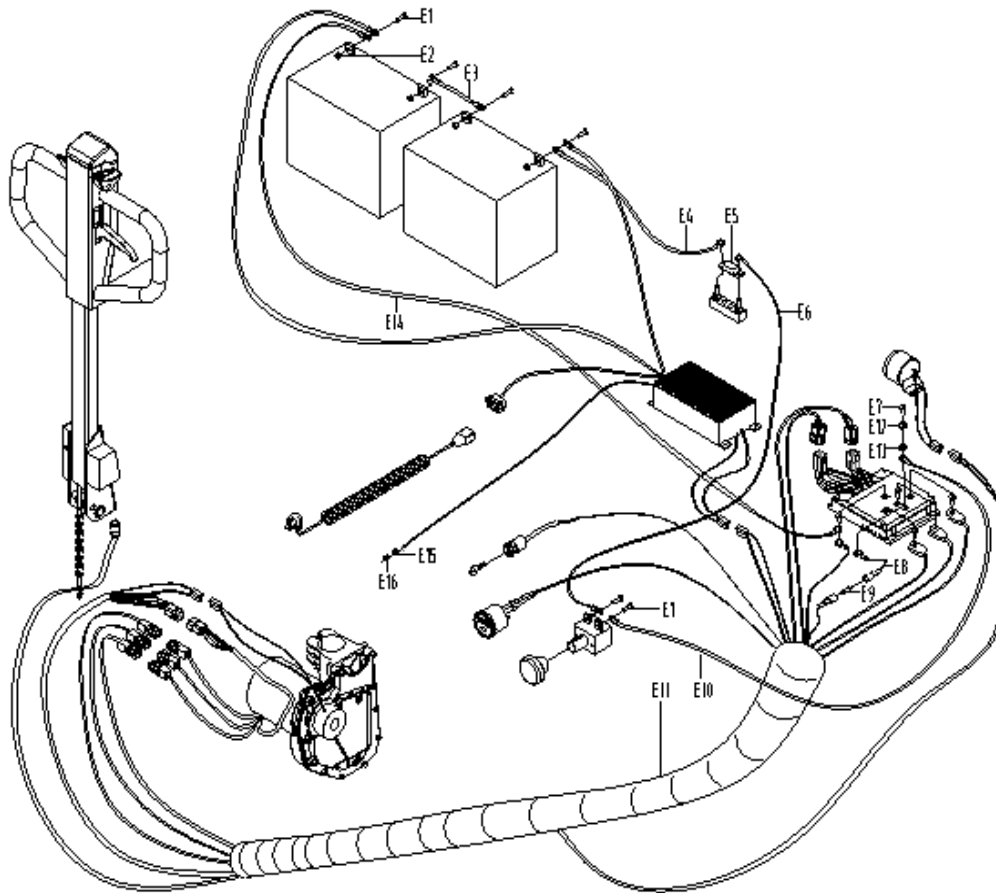
## ESET33 Oil Pump assembly 2



No.	Code	Name	Qty
P31	DH31.5	Dust proof washer 31.5	1
P32	AF.2-04	Plunger 31.5X263	1
P33	GB308-77	Steel ball 3/4"	1
P34	AM.2.3-02	Bowl gasket	1
P35	KC.2-05	Large spring cap	1
P36	CN.2-03	Large spring 5.5X48X1	1

No.	Code	Name	Qty
P37	DH18	Dust proof ring 18	1
P38	UN18A	Oil seal 18X26X5	1
P39	AM.2.3-07	Dual speed pump cylinder	1
P40	AM.2-07	Copper washer	1
P41	GB119-86	Cylindrical pin 4X25	1
P42	AM.2.3B.1-00	Dual speed pump internal assembly	1

# ESET33 Line assembly



No.	Code	Name	Qty
E1	GB/T5781-2000	Screw M8X20	6
E2	GB/T41-2000	Nut M8	4
E3		Line Between Battery	1
E4		Line 1	1
E5		Fuse 50A	1
E6		Line 2	1
E7	GB/T818-2000	Bolt M6X16	5
E8		Line 3	1
E9		Fuse 2A	1
E10		Line 4	1
E11		Line	1
E12	GB/T859-1987	Spring Washer 6	5
E13	GB/T95-2000	Washer 6	5
E14		Line 5	1
E15		Nut	1
E16		LED Seat	1