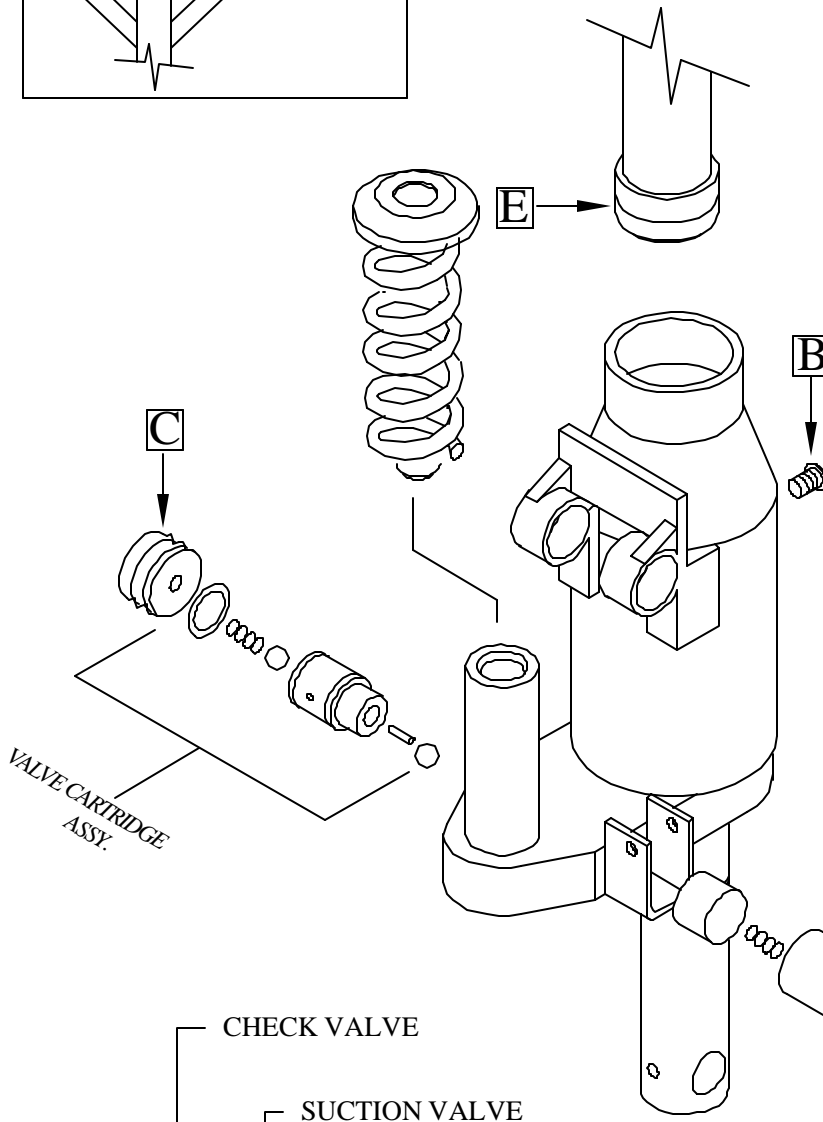
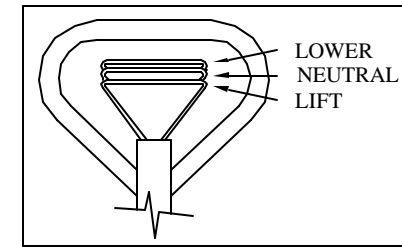
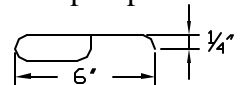


Mobile Hydraulic Pump Check Points

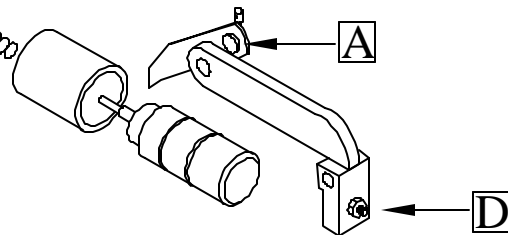
Pump not operating with control level in lift position

1. Check linkage for binding at 'A'
2. Check oil level at 'B' with lift piston in the lowest position. Remove filler screw oil must be level with hole.
3. Adjust screw at 'D' in anti-clockwise direction, one turn or until pump operates.
4. Remove plug 'C' and extract cartridge. Use piece of wire .10 thick bent as shown to pickup on $\frac{1}{8}$ holes in wall of cartridge for extracting. Seat ball valves with copper or brass punch and hammer lightly. Replace spring and plug. Reassemble. Adjust screw #2026 at 'D' in clockwise direction until jack starts lowering then turn back $\frac{1}{2}$ turn. Check the neutral position. Further adjustment may be necessary at this screw under load.



Pump lifts & lowers with pumping action.

Operation #4



Pump lifts but not lower
No neutral position

Adjust screw 'D' in clockwise direction $\frac{1}{2}$ turn and check if further adjustment is req'd. Turn in $\frac{1}{4}$ turns.

